

**Benchtop & Splashback**  
Statuario Matt

Hensley Apartments, Sydney  
Design by Woods Bagot



## MAXIMUM PORCELAIN PANELS - 12MM

Maximum Pressed Porcelain Panels are manufactured by one of Italy's leading porcelain and ceramic suppliers, Graniti Fiandre. The environment has always been an important focus at Fiandre in the production of their pressed porcelain panels; they are, and always have been, sustainable, green and environmentally friendly. Made from 100% all natural minerals, Maximum pressed porcelain panels are sustainable for the harmful elements that have been left out: they contain no sealants, waxes, epoxies, man made binders or artificial colouring agents that could add to harmful VOC emission after installation.

### TECHNICAL

Nominal panel size: 3200mm x 1500mm x 12mm

All 12mm porcelain panels require trimming before processing. All colours are supplied in one pattern as per images shown below.

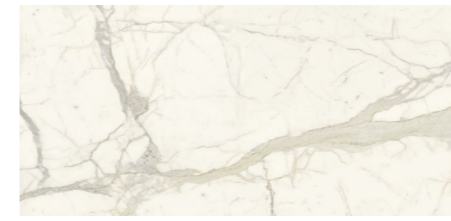
Throughbody veining available in some colours.

### APPLICATIONS

Maximum applications include all external wall cladding, internal floor and wall linings, shower recesses, kitchen benchtops and splashbacks, vanities, and applications over existing floors or walls.

- Suitable for all domestic, commercial, retail, multi-residential and refurbishment projects
- Maximum is made from 100% natural material with up to 40% recycled content
- No chemical binders or resins are used
- Maximum is UV resistant and can be used externally
- High strength and scratch resistance
- Thermal shock resistance
- Stain and mould resistance

### COLOURS



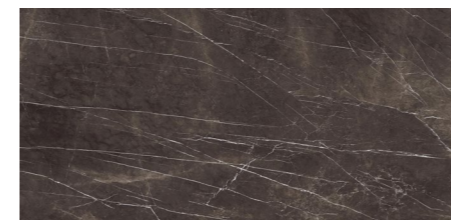
**Calacatta**  
Matt & Polished



**Statuario**  
Matt & Polished



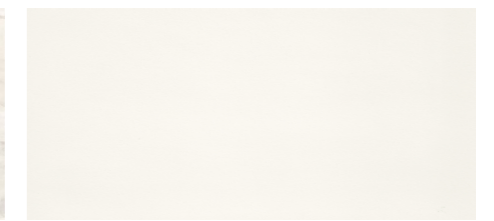
**Michelangelo**  
Matt & Polished



**Pietra Grey**  
Matt & Polished



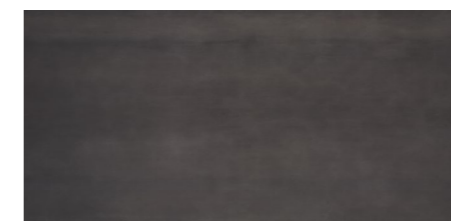
**Bright Onyx**  
Matt & Polished



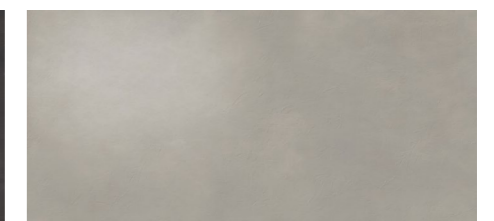
**Ice**  
Matt & Polished



**Steel**



**Zinc Titanium**



**Argento**

**MAXIMUM**  
W maximumaustralia.com P 1300 696 726